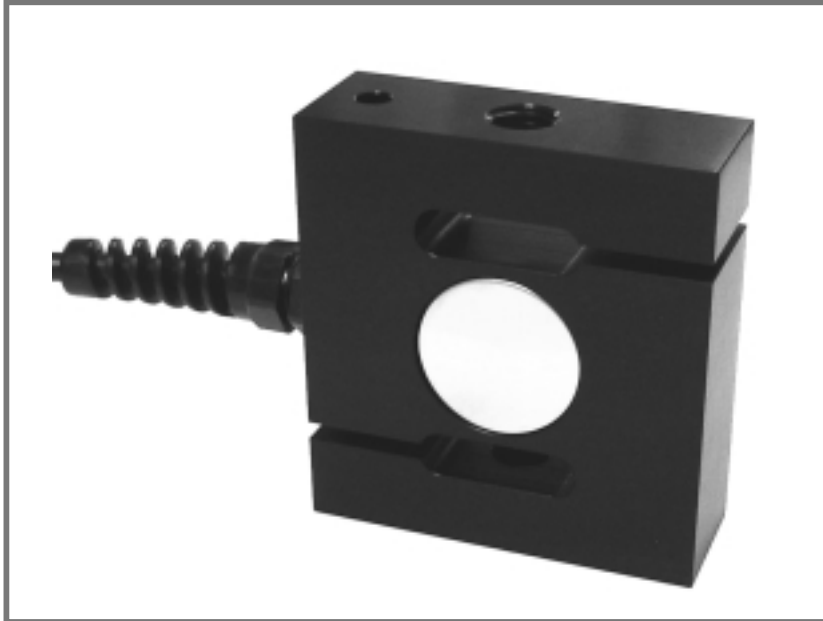


Anodised Aluminium 'S' Beam Tension and Compression LOAD CELL

DBBN Series



- Capacities 0.5kN to 50kN
- Sealed to IP65
- High Accuracy
- Anodised Aluminium Construction
- Robust Construction
- High Side Load Resistance
- Simple Installation
- 3 YEAR WARRANTY

Options Available

Different Cable Lengths

Full range of mounting options available, including:-
Load Button
– Spherical rod-end bearings

DESCRIPTION

The DBBN series S-beam load cell is designed for force measurement and weighing applications alike. Its ease of mounting makes it very attractive for use as a general purpose load cell and is equally suited for laboratory and industrial environments.

There are many options that are available to further enhance the usefulness of this series of load cells and to assist engineers with on site installation.

Applied Measurements also offer a wide range of Instrumentation to meet most weighing system requirements. We also offer a service, advising customers on their specific control requirements from the weighing system.

Transducer Specialists...

APPLIED MEASUREMENTS LIMITED

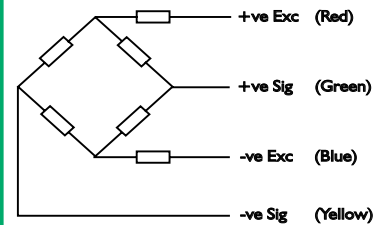


3 MERCURY HOUSE - CALLEVA PARK - ALDERMASTON - BERKSHIRE - RG7 8PN - UK

Tel: (+44) 0118 981 7339 Fax: (+44) 0118 981 9121 email: info@appmeas.co.uk Internet: www.appmeas.co.uk

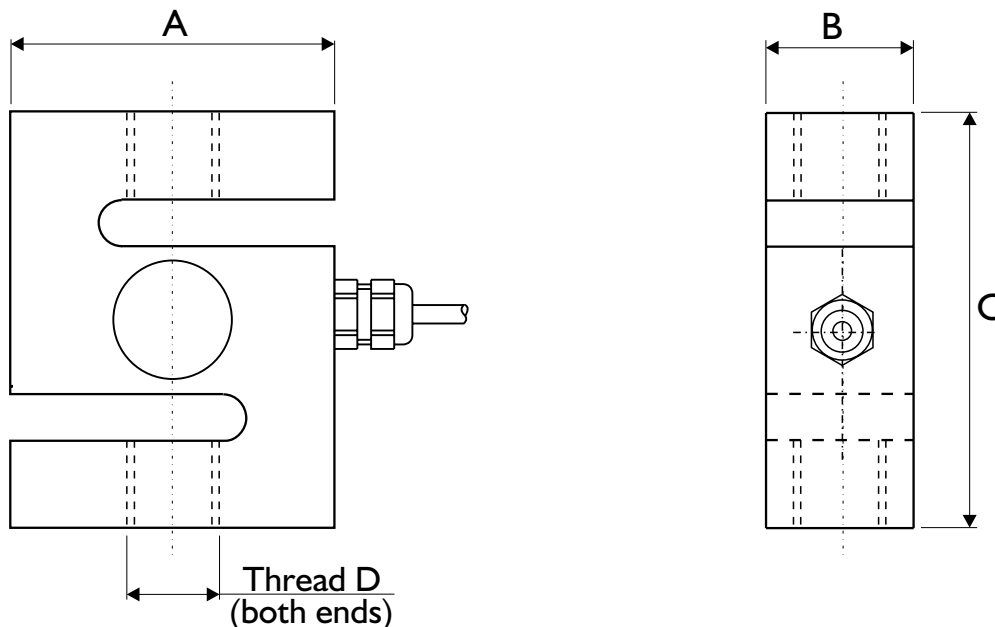
SPECIFICATION

Wiring Schematic Diagram



CHARACTERISTICS	DBBN	UNITS
Rated Capacities:	0.5, 1, 2.5, 5, 10, 20, 30, 50	KN
Rated Output:	2.0 ± 0.001	mV/V
Accuracy:	<0.050	±% of Applied Load
Zero Balance:	<0.5	±% of Rated Output
Temperature Range Operating:	-20 to +70	°C
Compensated:	+20 to +70	°C
Temperature Effect On Output:	<0.005	±% of Applied Load/°C
On Zero:	<0.005	±% of Rated Output/°C
Safe Overload:	150	% of Rated Capacity
Ultimate Overload:	200	% of Rated Capacity
Excitation Recommended:	10	VAC or VDC
Maximum:	15	VAC or VDC
Input Impedance:	375 nominal	Ohms
Output Impedance:	350 nominal	Ohms
Insulation Impedance:	>2000	Megaohms
Deflection at Rated Load:	<0.25	mm
Weight (without cable):	0.5kN to 5kN (0.41kg), 10kN to 20kN (0.61kg), 30kN to 50kN (1.4kg)	kg
Construction:	Anodised Aluminium	
Environmental Protection:	IP65	
Cable:	2 Metre 4 Core Screened	

All dimensions in mm



RANGE (kN)	A	B	C	Thread D
0.5, 1, 2.5, 5	70.0	25.0	75.0	M12
10, 20, 30, 50	75.0	30.0	100.0	M20 (M12 on 10kN)

